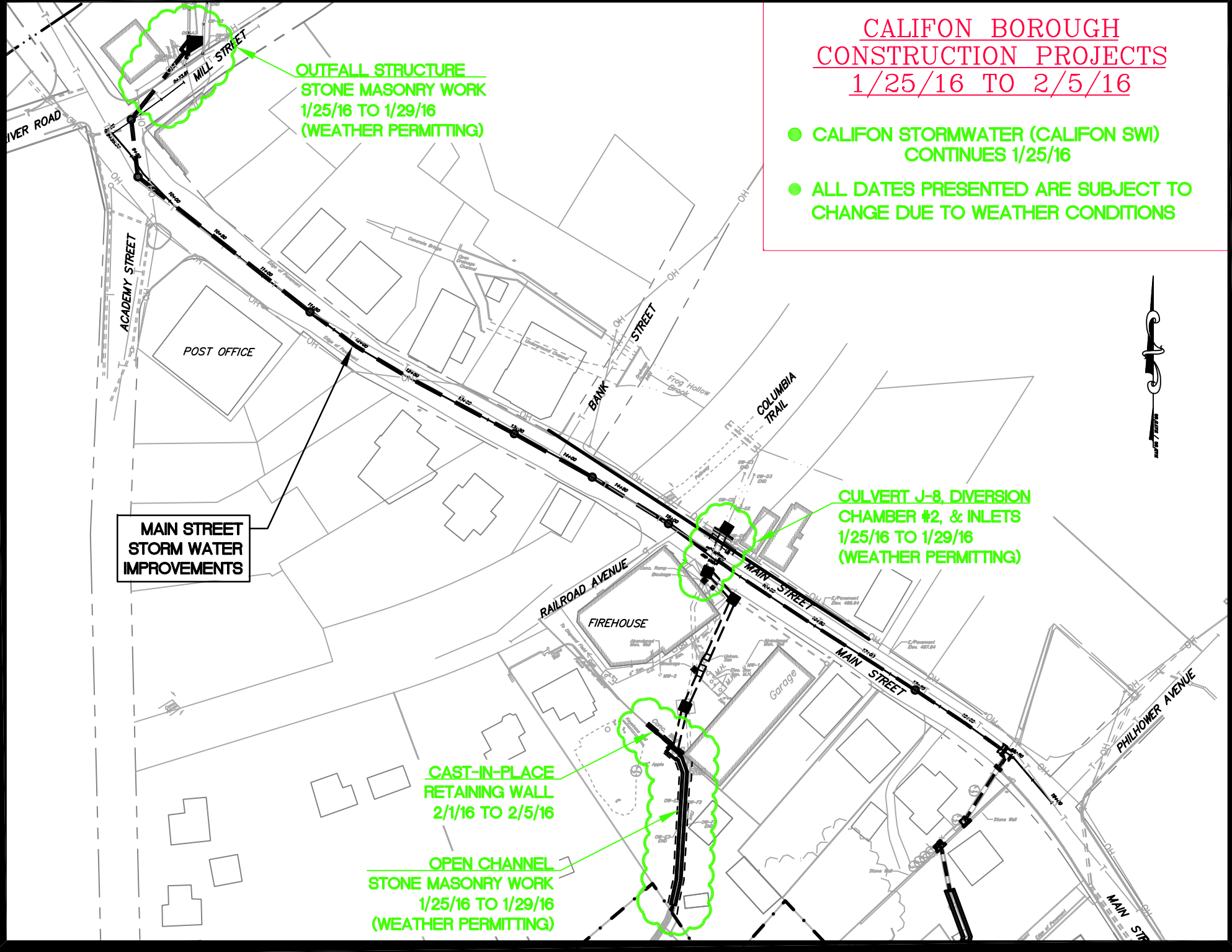


CALIFON BOROUGH
CONSTRUCTION PROJECTS
1/25/16 TO 2/5/16

- CALIFON STORMWATER (CALIFON SWI) CONTINUES 1/25/16
- ALL DATES PRESENTED ARE SUBJECT TO CHANGE DUE TO WEATHER CONDITIONS



OUTFALL STRUCTURE
STONE MASONRY WORK
1/25/16 TO 1/29/16
(WEATHER PERMITTING)

MAIN STREET
STORM WATER
IMPROVEMENTS

CULVERT J-8, DIVERSION
CHAMBER #2, & INLETS
1/25/16 TO 1/29/16
(WEATHER PERMITTING)

CAST-IN-PLACE
RETAINING WALL
2/1/16 TO 2/5/16

OPEN CHANNEL
STONE MASONRY WORK
1/25/16 TO 1/29/16
(WEATHER PERMITTING)