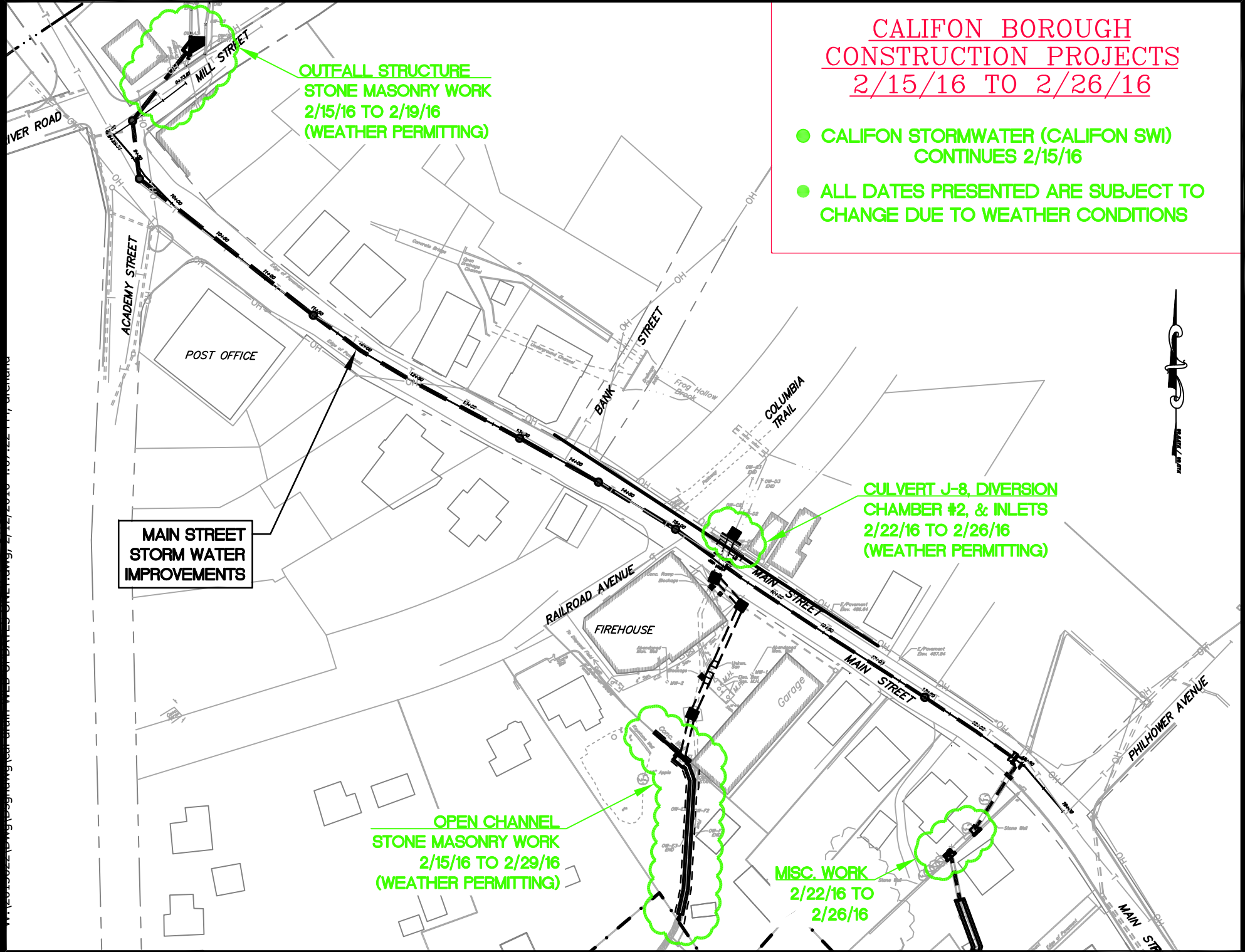


CALIFON BOROUGH  
CONSTRUCTION PROJECTS  
2/15/16 TO 2/26/16

- CALIFON STORMWATER (CALIFON SWI) CONTINUES 2/15/16
- ALL DATES PRESENTED ARE SUBJECT TO CHANGE DUE TO WEATHER CONDITIONS



\\c03s02z\paw\pawgawg\year\train\WEB-OF-DATES-ONEWAY\2/15/2016 10:12:17 AM